



# COMPOST TEA PACKS

Complete Compost Tea Package for use with all Compost Tea Brewers

## BENEFITS

- Boosts the soil food web in your soils for healthy friable rootzones
- Promotes establishment and longevity of fine grasses
- Greatly improves root mass and increases nutrient uptake
- Increases plant tolerance to drought and stress conditions
- Degrades thatch, improves drainage and reduces the need for hollow coring

## Symbio compost tea packs contain:

Specially formulated aerobic compost made under controlled conditions, and tested to ensure that it is free from seeds and pathogens. The compost is analysed to confirm it contains high quantities of soil fungi and bacteria, protozoa and beneficial nematodes for a complete microbial package. Key biostimulants including humic acid, molasses and plant based catalysts are present to promote rapid microbial growth during the brewing process.

**Application guide:** \*For best results consult your Symbio representative.

J	F	M	A	M	J	J	A	S	O	N	D



**PACK  
SIZE:  
50L  
100L**

## How to apply:

For sandy rootzones apply 100L Compost Tea in at least 400L water per hectare

For soil based rootzones apply 50-100L Compost Tea in at least 400L water

The aim is to drench the soil with beneficial microorganisms. In order to do this the greens require approx. 600 litres of combined compost tea and water

For soils that have been subjected to heavy inorganic fertiliser and pesticide use: apply every 7-10 days for the first three applications and then every 3-5 weeks. If the sward has traditionally been subject to bad attacks of disease, increase the frequency of application just before disease usually attacks and during times when disease is usually prevalent

For soils which have had fewer inorganic fertiliser inputs, apply every two weeks for the first two applications, then every 4-5 weeks

Do not tank mix compost tea with products containing iron, inorganic fertilisers or wetting agents

For best results liaise with your Symbio advisor for advice on the correct biostimulants and nutrition to suit your conditions and get the results you require

## CONTACT US TODAY:



Symbio, 1-3 Freeman Court, Jarman Way, Orchard Road, Royston, Hertfordshire, SG8 5HW T: 0800 138 7222

E: [sales.symbio@originamenity.com](mailto:sales.symbio@originamenity.com) [www.symbio.co.uk](http://www.symbio.co.uk) [www.originamenity.com](http://www.originamenity.com)

The Symbio brand is part of Origin Amenity Solutions Limited.



# COMPOST TEA PACKS

Technical Information

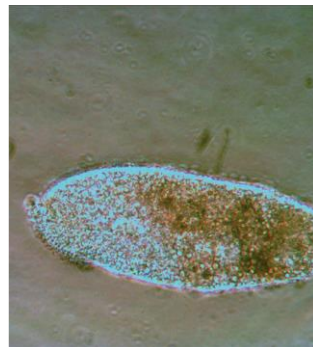
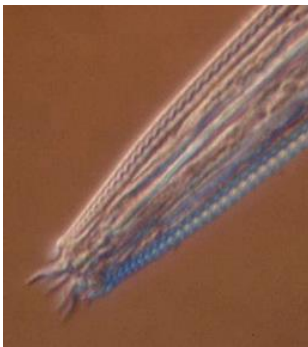
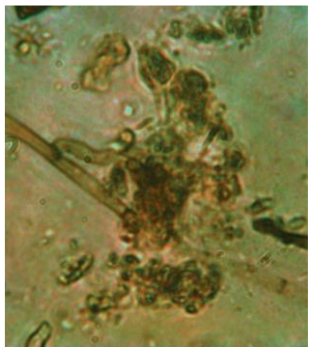
Symbio compost teas are highly concentrated microbial solutions containing a wide variety of beneficial bacteria, fungi and other soil organisms that promote biologically active soils and healthy plants.

Symbio compost tea packs contain everything required to produce a high quality microbially diverse compost tea. Young compost is inoculated with fungi and bacteria found in mature soils to create a complete microbial package. The compost is then tested to ensure that it is pathogen and seed-free.

A 100L pack treats 1 hectare of greens

## Contents of 100 Litre pack

- 2 x 1kg of fungal rich compost
- 1 pack (300 grams) Activating Nutrients (Premixed) This pack contains food and basic sugars and is a food source for the biology
- 1 pack Plant Extracts – a useful compost tea starter as it contains high levels of basic organic NPK



## TO MAKE GOOD COMPOST TEA

Fill the Compost Tea Brewer with 200 Litres water and turn the pump on for 15-30 mins. This will dissipate any chlorine

From the Compost Tea Box open the packs of compost and add to the tea bag  
For a fungal dominant brew: Add 500g-1kg of Fungal Additive to the tea bag – this will promote fine grasses

For a bacterial dominant brew: Add 125g-250g Bacterial Additive to the tea bag

Suspend the tea bag and contents in the brewer, so they are completely submerged

Add the contents of additional packs: Activating Nutrients + Plant Extracts to the brewer (outside the Tea Bag)

Leave to brew – ensuring the mixture remains well aerated throughout  
For a bacterial dominant brew use shorter brewing times of 10-12 hours

For a balanced bacteria : fungi compost tea, brew for 18-24 hours

For a fungal dominant brew use longer brewing times of 24-36 hours

Add ½ cup of vegetable oil if frothing is a problem

If the Compost Tea has not been used within 48 hours, feed with 500ml of seaweed or other biostimulant every 48 hours from starting point

## Re-Brews

Once the initial application is complete. It is possible to re-brew the compost, so long as the brewing process is started immediately. In this case add 1 litre of Symbio Biobooster Fish or Symbio 50% Seaweed to the brewing process.

**CONTACT US TODAY:**



Symbio, 1-3 Freeman Court, Jarman Way, Orchard Road, Royston,  
Hertfordshire, SG8 5HW T: 0800 138 7222

E: [sales.symbio@originamenity.com](mailto:sales.symbio@originamenity.com) [www.symbio.co.uk](http://www.symbio.co.uk) [www.originamenity.com](http://www.originamenity.com)

The Symbio brand is part of Origin Amenity Solutions Limited.